

ECONOMIC INDICATORS

NEW SOUTH WALES

EMBARGO: 11:30AM (CANBERRA TIME) TUES 15 JUNE 1999

C O N T E N T S

	<i>page</i>
Notes	2
NSW Overview	3
Main features	4
List of tables and graphs	5
 Population	 6
Labour	7
Production	10
Building	11
Retail trade	12
New motor vehicle registrations	13
Tourism	14
Consumer and producer price indexes	15
Finance	16
State Government finance	17
Investment	18
International trade	19

- For more information about these and related statistics, contact Bill Markham on 02 9268 4376 or e-mail bill.markham@abs.gov.au or refer to the back cover of this publication.

NOTES

FORTHCOMING ISSUES

ISSUE

RELEASE DATE

July 1999	14 July 1999
August 1999	16 August 1999
September 1999	14 September 1999
October 1999	15 October 1999
November 1999	15 November 1999
December 1999	14 December 1999

GENERAL

.....

This publication provides information on a wide range of economic indicators which are the latest available at the time of publication. In a number of cases, figures appearing in this summary are preliminary and are subject to revision in subsequent issues.

SEASONAL ADJUSTMENT AND TREND ESTIMATION

Seasonal adjustment is a means of removing the estimated effects of normal seasonal variation from a series so that the effects of other variations on that series can be more clearly recognised. Seasonal adjustment does not aim to remove the irregular or non-seasonal influences which may be present. This means that movements of seasonally adjusted estimates may not be reliable indicators of trend behaviour. Smoothing seasonally adjusted series produces a measure of the underlying trend by reducing the impact of the irregular component of the series. This smoothing technique does result in revisions to the most recent estimates as additional observations become available. For an explanation of seasonal adjustment derivation, refer to the publication *Seasonally Adjusted Indicators* (Cat. no. 1308.0).

STANDARD ERRORS OF ESTIMATES

One measure of the variability which occurs as a result of surveying only samples of the total business population is the standard error. There are about two chances in three that a survey estimate is within one standard error of the figure that would have been obtained if all businesses had been included, and about 19 chances in 20 that it is within two standard errors. The standard error can also be expressed as a percentage of the estimate and this is known as the relative standard error (RSE). For detailed explanatory notes and definitions for the items shown in this publication, readers are referred to the specific ABS publications.

Current publications produced by the ABS are listed in the *Catalogue of Publications* (Cat. no. 1101.0). A *Release Advice* (Cat. no. 1105.0) is issued on Tuesdays and Fridays which lists publications to be released in the next few days. These publications are available from any ABS office.

SYMBOLS AND OTHER USAGES

kWh	kilowatt hour
teraJ	terajoule
n.a.	not available
n.p.	not available for publication but included in totals where applicable
n.y.a.	not yet available
r	figure or series revised since previous issue
..	not applicable
—	nil or rounded to zero
—	break in continuity of series (where a line is drawn across a column between two consecutive figures)

Gregory W. Bray
Regional Director
New South Wales

NSW OVERVIEW

EMPLOYMENT

Employment in NSW has remained steady over the past month and in April 1999 the seasonally adjusted estimate of employed persons was 2,901,000. National employment of 8,711,100 persons was also relatively steady in this period.

UNEMPLOYMENT

Unemployment in NSW fell by 1.7% in April 1999 to a seasonally adjusted figure of 216,100 and the unemployment rate fell from 7.0% to 6.9%. The national unemployment rate rose marginally to 7.5%.

AVERAGE WEEKLY EARNINGS

Full-time adult ordinary time earnings in NSW increased by 1.6% over the quarter to a seasonally adjusted figure of \$783.60 per week in February 1999. The annual increase in earnings was 5.3% in NSW and 3.1% in Australia.

BUILDING APPROVALS

The seasonally adjusted number of new dwelling units approved for NSW in March 1999 increased by 6.7% from the previous month to 4,347.

RETAIL

In seasonally adjusted terms, total retail sales for NSW in March 1999 was \$4,247.8m. For February 1999, the figure was \$4,175.5m.

NEW MOTOR VEHICLE REGISTRATIONS

New motor vehicle registrations for NSW in seasonally adjusted terms in March 1999 rose 9.8% from the previous month to 23,601.

FINANCE

The seasonally adjusted value of housing finance commitments for owner occupation in NSW in March 1999 was \$2,179m. This represented an increase of 14.3% on the previous month and an increase of 22.6% since March 1998.

MAIN FEATURES

RETAIL TRADE

In seasonally adjusted terms, total retail sales for NSW in March 1999 was \$4,247.8m. For all retail industry groups, there were no significant movements from the previous month. However, compared to March 1998, significant movements occurred for some retail industry groups as well as for total retail sales. Department stores increased by 8.0% to \$361.0m, Clothing and soft good retailing rose by 9.5% to \$290.5m, and Hospitality and services increased by 23.5% to \$938.9m. Total retail sales rose by 7.0% over the same period.

Nationally, total retail sales in March 1999 was \$12,358.5m. Unlike NSW, there were significant movements across some retail industry groups when compared to February 1999. Department stores increased by 5.4% to \$1,088.9m, and Clothing and soft good retailing rose by 4.8% to \$856.0m. Compared to March 1998, there were significant increases in retail sales across all industry groups, except Household good retailing. The most significant movements occurred for Clothing and soft good retailing (up 17.5%), Recreational good retailing (up 11.3%), and Hospitality and services (up 16.1%). Total retail sales increased by 9.4% over the same period.

FINANCE

The seasonally adjusted estimate for the value of housing finance commitments in NSW was \$2,179m in March 1999, a rise of 14.3% from February 1999. This figure increased by 22.6% over the previous year from March 1998.

In original terms, there was an overall 38.6% increase in total commitments for NSW in March 1999. This was due to an increase in all indicators for March 1999. Commitments to purchase established dwellings increased 40.6% to \$1,720m, commitments for the construction of dwellings rose by 41.8% to \$339m and commitments for the purchase of newly erected dwellings rose by 42.7% to \$107m. Commitments for refinancing also rose, increasing 27.1% to \$397m.

Compared to the housing finance figures of March 1998, all components rose over the period, with the exception of commitments for the purchase of newly erected dwellings which fell 4.5%. Commitments for the construction of dwellings rose 41.8%, commitments for the purchase of established dwelling rose by 33.4% and commitments for refinancing rose 26.1%.

The average borrowing size in NSW in March 1999 was \$158,800. This was an increase of 14.9% from the average of \$138,200 recorded for March 1998.

Nationally, the seasonally adjusted value of lending commitments for housing finance rose by 10.7% to \$5,600m in March 1999 and was 27.2% higher than in March 1998.

LIST OF TABLES AND GRAPHS

Page

POPULATION

- 1** Estimated resident population, NSW 6

LABOUR

- 2** Labour data, latest time period, NSW and Australia 7
3 Labour data, time series, NSW 7
4 Labour force status of the civilian population, NSW 8
5 Graph: Unemployment rates, NSW and Australia 9

PRODUCTION

- 6** Coal, electricity and gas production, latest time period, NSW and Australia . 10
7 Coal, electricity and gas production, time series, NSW 10

BUILDING

- 8** Building approvals, latest time period, NSW and Australia 11
9 Building approvals, time series, NSW 11

RETAIL TRADE

- 10** Turnover of retail establishments, latest time period, NSW and Australia . . . 12
11 Turnover of retail establishments, time series, NSW 12

NEW MOTOR VEHICLE REGISTRATIONS

- 12** New motor vehicle registrations, latest time period, NSW and Australia 13
13 New motor vehicle registrations, time series, NSW 13

TOURISM

- 14** Accommodation Establishments, latest time period, NSW and Australia 14
15 Accommodation Establishments, time series, Sydney and NSW 14
16 Graph: Hotels, motels etc., monthly room occupancy rates,
 Sydney Tourism Region and NSW 14

CONSUMER AND PRODUCER PRICE INDEXES

- 17** Consumer and producer price indexes, latest time period,
 NSW and Australia 15
18 Consumer and producer price indexes, time series, NSW 15
19 Graph: Consumer Price Index, Sydney and average of 8 capital cities 15

HOUSING FINANCE

- 20** Finance commitments, latest time period, NSW and Australia 16
21 Finance commitments, time series, NSW 16

STATE GOVERNMENT FINANCE

- 22** Government finance, general government sector, time series, NSW 17

INVESTMENT

- 23** Actual private new fixed capital expenditure, latest time period,
 NSW and Australia 18
24 Actual private new fixed capital expenditure, time series, NSW 18
25 Graph: Actual private new fixed capital expenditure, NSW 18

INTERNATIONAL TRADE

- 26** Imports and exports, latest time period, NSW and Australia 19
27 Imports and exports, time series, NSW 19

1

ESTIMATED RESIDENT POPULATION, NSW

Period	Estimated resident population at end of period			Increase during period			Mean estimated resident population for year ended	
	Males	Females	Persons	Natural increase(a)	Net estimated migration	Total increase(b)	30 June	31 December
	'000	'000	'000	'000	'000	'000	'000	'000
1995	3 064.0	3 104.8	6 168.8	42.0	33.7	75.7	6 093.2	6 128.0
1996	3 098.9	3 143.1	6 241.9	41.8	31.3	73.1	6 167.2	6 204.2
1997	3 129.9	3 172.6	6 302.5	41.2	19.3	60.6	6 240.9	6 276.1
1997								
June qtr	3 114.7	3 158.1	6 272.8	10.7	0.9	11.5
September qtr	3 123.3	3 165.9	6 289.2	7.6	8.8	16.4
December qtr	3 129.9	3 172.6	6 302.5	11.9	1.3	13.2
1998								
March qtr	3 143.1	3 184.3	6 327.4	9.9	15.0	24.9
June qtr	3 150.5	3 191.1	6 341.6	10.2	4.0	14.2
September qtr	3 161.5	3 201.6	6 363.0	8.2	13.2	21.4

^a Excess of live births over deaths.

^b For dates prior to June 1996, differences between the total increase shown and the sum of the natural increase and net estimated migration arise from retrospective adjustments to population estimates (which are made after each Census) to compensate for any intercensal discrepancy. A description of intercensal discrepancy is contained in the ABS information paper Demographic Estimates: Concepts, Sources and Methods (Cat. no. 3228.0).

Source: Australian Demographic Statistics (Cat. no. 3101.0).

2

LABOUR, NSW AND AUSTRALIA

Indicator	Unit	Latest period	Latest figure	New South Wales		Australia		
				Change from prior period	Change from same period prior year	Latest figure	Change from prior period	Change from same period prior year
				%	%		%	%
Employed persons (seasonally adjusted)	'000	Apr 99	2 901.0	-0.1	1.7	8 711.1	0.1	1.6
Unemployed persons (seasonally adjusted)	'000	Apr 99	216.1	-1.7	-1.5	707.0	1.7	-4.0
Labour force (seasonally adjusted)	'000	Apr 99	3 117.1	-0.2	1.4	9 418.2	0.2	1.2
Participation rate (seasonally adjusted)	%	Apr 99	61.6	-0.3	0.0	63.0	0.0	-0.3
Unemployment rate (seasonally adjusted)	%	Apr 99	6.9	-1.4	-2.8	7.5	1.4	-5.1
Industrial disputes—working days lost	'000	Feb 99	40.3	1 392.6	333.3	47.6	473.5	20.8
Job vacancies	'000	Feb 99	24.4	1.1	4.0	66.6	-14.0	-11.8
Average weekly employee earnings—full-time adult ordinary time earnings (seasonally adjusted)	\$	Feb 99	783.6	1.6	5.3	743.1	0.2	3.1

Source: Labour Force, Australia, Preliminary (Cat. no. 6202.0), Job Vacancies and Overtime, Australia (Cat. no. 6354.0), Industrial Disputes, Australia (Cat. no. 6321.0), Average Weekly Earnings, States and Australia (Cat. no. 6302.0).

3

LABOUR, NSW

Period	Seasonally adjusted						
	Employed persons	Unemployed persons	Labour force	Participation rate	Unemployment rate	Industrial disputes (working days lost)	Job vacancies
	'000	'000	'000	%	%	'000	'000
1998							
February	2 815.9	229.1	3 045.0	61.1	7.5	9.3	23.5
March	2 838.4	229.0	3 067.4	61.5	7.5	19.7	..
April	2 853.5	219.5	3 073.0	61.6	7.1	8.1	..
May	2 845.3	229.9	3 075.2	61.5	7.5	28.1	20.5
June	2 868.8	233.5	3 102.3	62.0	7.5	32.1	..
July	2 890.0	230.9	3 120.9	62.3	7.4	10.3	..
August	2 851.9	230.8	3 082.7	61.5	7.5	20.8	26.4
September	2 895.0	227.3	3 122.3	62.2	7.3	7.6	..
October	2 904.6	207.2	3 111.8	61.9	6.7	8.9	..
November	2 859.4	238.2	3 097.6	61.6	7.7	10.4	24.1
December	2 891.5	211.5	3 103.0	61.6	6.8	28.8	..
1999							
January	2 884.6	215.2	3 099.8	61.5	6.9	2.7	..
February	2 906.0	208.7	3 114.7	61.7	6.7	40.3	24.4
March	2 903.5	219.8	3 123.3	61.8	7.0	n.y.a.	..
April	2 901.0	216.1	3 117.1	61.6	6.9	n.y.a.	..

Source: Labour Force, Australia, Preliminary (Cat. no. 6202.0), Industrial Disputes, Australia (Cat. no. 6321.0), Job Vacancies and Overtime, Australia (Cat. no. 6354.0).

Month	Employed		Unemployed		Labour force	Not in labour force	Civilian population aged 15 years and over	Unemployment rate(a)	Participation rate(b)
	Full-time workers	Total	Looking for full-time work	Total					
	'000	'000	'000	'000	'000	'000	'000	%	%
MALES									
April									
1995	1 400.7	1 574.3	121.8	133.4	1 707.7	644.5	2 352.2	7.8	72.6
1996	1 407.4	1 581.5	125.8	145.0	1 726.4	658.9	2 385.4	8.4	72.4
1997	1 421.6	1 610.2	119.8	137.9	1 748.1	670.1	2 418.2	7.9	72.3
1998									
February	1 432.9	1 600.3	127.7	149.3	1 749.6	696.4	2 446.1	8.5	71.5
March	1 434.0	1 614.9	122.2	139.4	1 754.3	694.5	2 448.8	7.9	71.6
April	1 443.1	1 624.3	103.4	121.5	1 745.8	705.7	2 451.5	7.0	71.2
May	1 435.3	1 616.3	114.6	132.1	1 748.4	705.9	2 454.3	7.6	71.2
June	1 444.7	1 626.2	116.7	133.8	1 760.0	697.0	2 457.0	7.6	71.6
July	1 465.0	1 641.6	114.2	126.6	1 768.2	691.5	2 459.7	7.2	71.9
August	1 424.3	1 599.4	115.5	134.6	1 734.1	728.4	2 462.4	7.8	70.4
September	1 466.6	1 649.3	117.0	134.2	1 783.4	681.8	2 465.2	7.5	72.3
October	1 460.5	1 648.9	96.8	110.5	1 759.4	709.0	2 468.4	6.3	71.3
November	1 441.2	1 633.0	112.0	129.4	1 762.4	709.1	2 471.5	7.3	71.3
December	1 467.6	1 658.3	107.6	121.5	1 779.8	695.0	2 474.7	6.8	71.9
1999									
January	1 447.1	1 633.0	124.6	140.8	1 773.8	703.8	2 477.5	7.9	71.6
February	1 453.4	1 644.9	113.5	133.1	1 778.0	702.4	2 480.3	7.5	71.7
March	1 454.3	1 661.9	102.9	126.1	1 788.0	695.2	2 483.1	7.1	72.0
April	1 456.1	1 657.8	95.6	115.5	1 773.3	713.3	2 486.6	6.5	71.3
FEMALES									
April									
1995	699.7	1 168.4	57.9	91.9	1 260.3	1 178.2	2 438.6	7.3	51.7
1996	723.8	1 191.0	67.9	100.1	1 291.1	1 184.5	2 475.6	7.8	52.2
1997	731.7	1 213.5	68.2	103.7	1 317.2	1 192.4	2 509.6	7.9	52.5
1998									
February	709.5	1 192.3	71.2	110.8	1 303.2	1 232.7	2 535.9	8.5	51.4
March	718.4	1 220.7	72.8	104.5	1 325.2	1 213.1	2 538.3	7.9	52.2
April	722.2	1 228.7	62.7	95.5	1 324.2	1 216.6	2 540.8	7.2	52.1
May	710.2	1 224.1	68.2	93.7	1 317.8	1 225.5	2 543.3	7.1	51.8
June	730.2	1 245.8	57.1	88.3	1 334.1	1 211.8	2 545.9	6.6	52.4
July	765.8	1 259.0	59.7	88.2	1 347.2	1 201.3	2 548.5	6.5	52.9
August	724.7	1 220.6	62.4	85.0	1 305.5	1 245.5	2 551.1	6.5	51.2
September	756.9	1 276.0	61.7	97.1	1 373.1	1 180.6	2 553.7	7.1	53.8
October	751.4	1 258.7	54.8	90.3	1 349.0	1 207.6	2 556.6	6.7	52.8
November	733.3	1 235.5	61.0	96.8	1 332.3	1 227.2	2 559.6	7.3	52.1
December	762.7	1 276.6	57.4	86.6	1 363.3	1 199.2	2 562.5	6.4	53.2
1999									
January	739.5	1 218.0	62.6	90.1	1 308.0	1 257.1	2 565.1	6.9	51.0
February	738.4	1 236.4	67.4	104.5	1 340.9	1 226.8	2 567.7	7.8	52.2
March	728.8	1 238.3	64.3	108.7	1 347.0	1 223.3	2 570.2	8.1	52.4
April	726.0	1 242.6	62.5	98.5	1 341.2	1 232.0	2 573.2	7.3	52.1

For footnotes see end of table.

4

LABOUR FORCE STATUS, NSW—ORIGINAL *continued*

Month	Employed		Unemployed		Labour force	Not in labour force	Civilian population aged 15 years and over	Unemployment rate(a)	Participation rate(b)
	Full-time workers	Total	Looking for full-time work	Total					
	'000	'000	'000	'000	'000	'000	'000	%	%
PERSONS									
April									
1995	2 100.3	2 742.7	179.6	225.3	2 968.1	1 822.7	4 790.8	7.6	62.0
1996	2 131.2	2 772.5	193.7	245.1	3 017.6	1 843.4	4 861.0	8.1	62.1
1997	2 153.3	2 823.7	187.9	241.5	3 065.2	1 862.5	4 927.7	7.9	62.2
1998									
February	2 142.4	2 792.7	198.9	260.1	3 052.8	1 929.1	4 981.9	8.5	61.3
March	2 152.4	2 835.6	195.0	243.9	3 079.5	1 907.6	4 987.1	7.9	61.7
April	2 165.3	2 853.1	166.1	217.0	3 070.0	1 922.3	4 992.4	7.1	61.5
May	2 145.5	2 840.4	182.8	225.8	3 066.2	1 931.4	4 997.6	7.4	61.4
June	2 174.8	2 872.0	173.8	222.1	3 094.1	1 908.8	5 002.9	7.2	61.8
July	2 230.8	2 900.5	173.8	214.8	3 115.3	1 892.8	5 008.2	6.9	62.2
August	2 149.1	2 820.0	177.9	219.6	3 039.6	1 973.9	5 013.5	7.2	60.6
September	2 223.5	2 925.2	178.7	231.3	3 156.5	1 862.4	5 018.9	7.3	62.9
October	2 211.9	2 907.6	151.6	200.8	3 108.4	1 916.6	5 025.0	6.5	61.9
November	2 174.5	2 868.5	173.0	226.3	3 094.7	1 936.4	5 031.1	7.3	61.5
December	2 230.2	2 934.9	165.0	208.1	3 143.1	1 894.2	5 037.2	6.6	62.4
1999									
January	2 186.6	2 850.9	187.1	230.9	3 081.8	1 960.9	5 042.6	7.5	61.1
February	2 191.8	2 881.3	180.9	237.5	3 118.8	1 929.2	5 048.0	7.6	61.8
March	2 183.2	2 900.2	167.2	234.8	3 134.9	1 918.4	5 053.4	7.5	62.0
April	2 182.1	2 900.4	158.1	214.0	3 114.5	1 945.3	5 059.8	6.9	61.6

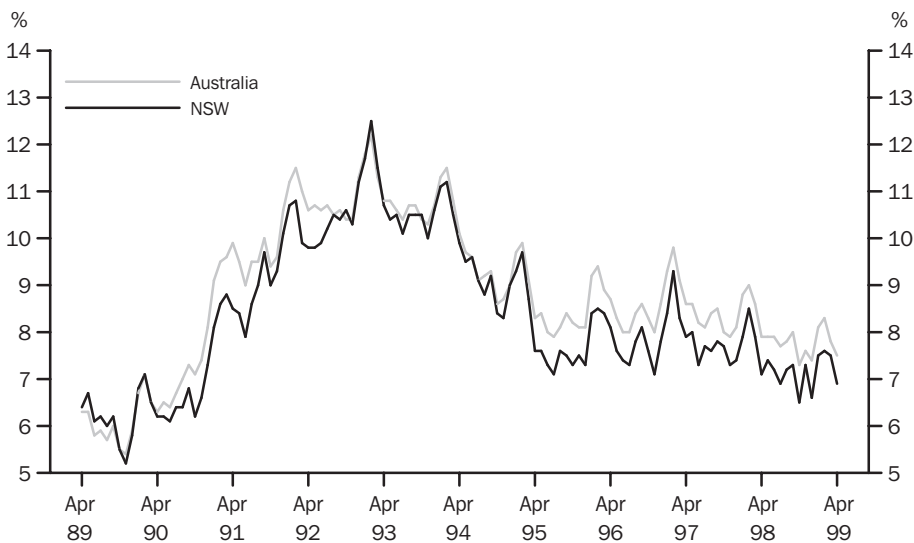
^a The number of unemployed in each group expressed as a percentage of the labour force in the same group.

^b The labour force in each group expressed as a percentage of the civilian population aged 15 years and over in the same group.

Source: Labour Force, Australia, Preliminary (Cat. no. 6202.0).

5

UNEMPLOYMENT RATE—ORIGINAL



Source: Labour Force, Australia, Preliminary (Cat. no. 6202.0).

6

COAL, ELECTRICITY AND GAS PRODUCTION, NSW AND AUSTRALIA—ORIGINAL

Indicator	Unit	Latest period	New South Wales				Australia	
			Latest figure	%	Change from same period prior year	Latest figure	%	Change from same period prior year
Raw coal won—								
Underground	'000 tonnes	Feb 99	3 848	17.6	–15.6	5 357	11.2	–5.6
Open cut	'000 tonnes	Feb 99	6 869	11.7	20.1	17 504	7.2	25.3
Total	'000 tonnes	Feb 99	10 717	13.7	4.3	22 862	8.1	16.4
Electricity	mill. kWh	Dec qtr 98	15 227	–8.0	0.0	43 235	–6.2	0.2
Gas(a)	teraJ	Dec qtr 98	25 039	–22.4	–1.6	157 436	–17.5	4.0

^a Available for issue through mains. Includes ACT.

Source: Joint Coal Board for NSW and Australia from ABS unpublished statistics, *Manufacturing Production, Australia* (Cat. no. 8301.0).

7

COAL, ELECTRICITY AND GAS PRODUCTION, NSW—ORIGINAL

Period	Raw coal won			Electricity mill. kWh	Gas(a) teraJ
	Underground	Open cut	Total		
	'000 tonnes	'000 tonnes	'000 tonnes		
1995–96	54 314	58 775	113 089	62 047	104 141
1996–97	54 643	69 037	123 680	62 788	109 284
1997–98	58 299	75 710	134 009	61 804	111 665
1997					
December	4 090	5 997	10 087	n.a.	n.a.
1998					
January	5 292	6 463	11 755	14 390	22 521
February	4 553	5 948	10 501		
March	4 437	5 800	10 237		
April	5 160	7 052	12 212	15 561	29 614
May	4 648	5 851	10 499		
June	4 842	6 811	11 653		
July	5 130	7 241	12 371	16 543	32 258
August	3 788	5 616	9 404		
September	4 734	6 372	11 106		
October	4 732	7 131	11 863	15 227	25 039
November	3 988	6 931	10 919		
December	3 340	6 500	9 841		
1999					
January	3 273	6 152	9 425	n.a.	n.a.
February	3 848	6 869	10 717	n.a.	n.a.

^a Available for issue through mains. Includes ACT.

Source: Joint Coal Board, *Manufacturing Production, Australia* (Cat. no. 8301.0).

Indicator	Unit	Latest period	Latest figure	New South Wales		Latest figure	Australia	
				Change from prior period	Change from same period prior year		Change from prior period	Change from same period prior year
				%	%		%	%
Number of dwelling units(a) (seasonally adjusted)—								
New houses	No.	Mar 99	2 588	6.1	–0.2	8 979	–3.2	–3.8
Total	No.	Mar 99	4 347	6.7	–6.2	12 289	–6.7	–9.3
Value of new residential building (seasonally adjusted)	\$m	Mar 99	526.2	2.2	0.6	1 420.9	–3.7	–4.7
Value of alterations and additions to residential building(b) (seasonally adjusted)	\$m	Mar 99	96.1	–9.5	–14.7	232.1	–4.5	–6.9
Value of non-residential building(c) (original)	\$m	Mar 99	394.5	–8.0	2.1	1 063.7	–11.2	10.8
Value of all building (original)	\$m	Mar 99	994.8	0.4	0.6	2 765.6	–0.4	3.6

^a Includes dwelling units approved as part of the construction of non-residential building and alterations and additions to existing buildings (including conversions to dwelling units).

^b Valued at \$10,000 or more. Includes conversions of existing buildings into residential buildings.

^c Valued at \$50,000 or more.

Source: Building Approvals, Australia (Cat. no. 8731.0).

Period	Number of dwelling units(a), seasonally adjusted				Value of building approvals			
	New houses		Total		Seasonally adjusted		Original	
	Private sector	Total	Private sector	Total	Alterations and additions to residential building(b)	Non-residential building(c)	All building	
	no.	no.	no.	no.	\$m	\$m	\$m	\$m
1995–96	3 650.3	9 168.6
1996–97	5 169.2	11 356.6
1997–98	5 910.9	13 348.6
1998								
January	2 621	2 648	4 395	4 506	450.2	144.0	477.0	984.0
February	2 451	2 482	3 635	3 767	413.4	122.5	461.8	943.8
March	2 574	2 592	4 496	4 633	522.9	112.7	386.4	988.9
April	2 578	2 585	4 909	5 025	577.0	160.4	527.0	1 263.2
May	2 405	2 419	3 970	4 047	459.6	129.4	645.7	1 335.0
June	2 483	2 529	5 145	5 246	576.8	139.1	534.3	1 214.8
July	2 289	2 450	4 594	4 920	564.1	142.5	329.9	1 103.2
August	2 000	2 016	3 672	3 776	465.5	91.3	612.0	1 158.0
September	2 037	2 060	3 773	3 857	416.0	97.2	322.9	867.3
October	2 348	2 357	3 983	4 138	468.0	79.2	313.5	862.1
November	2 240	2 314	4 085	4 497	556.1	94.4	461.5	1 180.1
December	2 393	2 421	4 418	4 636	547.8	90.6	234.7	838.5
1999								
January	2 206	2 230	4 227	4 327	473.5	94.1	297.1	756.3
February	2 421	2 440	3 995	4 074	515.0	106.2	428.9	990.4
March	2 580	2 588	4 192	4 347	526.2	96.1	394.5	994.8

^a Includes dwelling units approved as part of the construction of non-residential building and alterations and additions to existing buildings (including conversions to dwelling units).

^b Valued at \$10,000 or more. Includes conversions of existing buildings into residential buildings.

^c Valued at \$50,000 or more.

Source: Building Approvals, Australia (Cat. no. 8731.0)

10

TURNOVER OF RETAIL ESTABLISHMENTS(a), NSW AND AUSTRALIA—SEASONALLY ADJUSTED

Indicator	Latest period	New South Wales			Australia		
		Latest figure	Change from prior period	Change from same period prior year	Latest figure	Change from prior period	Change from same period prior year
		\$m	%	%	\$m	%	%
Food retailing	Mar 99	1 613.0	3.6	4.2	4 998.2	3.2	8.1
Department stores	Mar 99	361.0	0.8	8.0	1 088.9	5.4	8.8
Clothing and soft good retailing	Mar 99	290.5	1.9	9.5	856.0	4.8	17.5
Household good retailing	Mar 99	395.9	-3.2	-11.0	1 266.8	-4.4	-0.5
Recreational good retailing	Mar 99	244.7	8.0	9.2	704.5	4.2	11.3
Other retailing	Mar 99	403.9	-3.0	2.5	1 274.4	3.6	8.5
Hospitality and services	Mar 99	938.9	1.7	23.5	2 169.8	0.6	16.1
Total value of retail sales	Mar 99	4 247.8	1.7	7.0	12 358.5	2.3	9.4

^a The figures shown are derived from a monthly survey of retail establishments. Excludes motor vehicle, boat and caravan dealers, service stations, smash repairers, tyre and battery retailers, bread and milk vendors, footwear repairers and electrical appliance repairers n.e.c. Retail establishments which do not have employees are excluded from the survey. Turnover includes retail sales, wholesale sales, takings from repairs, meals and hiring of goods; and commissions from agency activity (e.g. commissions received from collecting dry cleaning, selling lottery tickets etc.).

Source: Retail Trade, Australia (Cat. no. 8501.0).

11

TURNOVER OF RETAIL ESTABLISHMENTS(a), NSW—SEASONALLY ADJUSTED

Period	Food retailing	Department stores	Clothing and soft good retailing	Household good retailing	Recreational good retailing	Other retailing	Hospitality and services	Total
	\$m	\$m	\$m	\$m	\$m	\$m	\$m	\$m
1998								
January	1 560.2	367.4	267.4	438.8	234.4	398.3	760.3	4 026.8
February	1 558.1	328.7	266.5	437.4	224.7	407.0	754.4	3 976.9
March	1 547.6	334.2	265.2	444.7	224.0	394.2	760.3	3 970.3
April	1 515.9	354.9	269.6	434.1	229.8	405.0	762.3	3 971.5
May	1 510.2	362.3	286.9	426.9	221.5	407.7	775.4	3 991.0
June	1 532.2	312.4	271.8	422.6	224.5	412.4	775.2	3 951.0
July	1 514.5	395.7	281.4	426.9	219.5	406.0	801.9	4 046.0
August	1 483.1	348.5	286.4	425.6	205.2	397.3	785.4	3 931.4
September	1 530.0	355.6	296.4	416.2	221.5	405.1	794.3	4 019.1
October	1 552.4	358.9	310.6	400.4	224.5	393.5	808.8	4 049.2
November	1 528.5	381.2	294.9	391.4	221.3	395.7	851.7	4 064.6
December	1 535.5	341.4	296.0	389.2	222.5	395.8	821.1	4 001.5
1999								
January	1 575.2	417.2	298.5	435.2	235.2	409.9	893.0	4 264.3
February	1 557.1	358.2	285.0	409.1	226.5	416.6	922.9	4 175.5
March	1 613.0	361.0	290.5	395.9	244.7	403.9	938.9	4 247.8

^a The figures shown are derived from a monthly survey of retail establishments. Excludes motor vehicle, boat and caravan dealers, service stations, smash repairers, tyre and battery retailers, bread and milk vendors, footwear repairers and electrical appliance repairers n.e.c. Retail establishments which do not have employees are excluded from the survey. Turnover includes retail sales, wholesale sales, takings from repairs, meals and hiring of goods; and commissions from agency activity (e.g. commissions received from collecting dry cleaning, selling lottery tickets etc.).

Source: Retail Trade, Australia (Cat. no. 8501.0).

12

NEW MOTOR VEHICLE REGISTRATIONS(a), NSW AND AUSTRALIA—SEASONALLY ADJUSTED

Indicator	Latest period	New South Wales			Australia		
		Latest figure	Change from prior period	Change from same period prior year	Latest figure	Change from prior period	Change from same period prior year
		no.	%	%	no.	%	%
Passenger vehicles	Mar 99	19 978	10.1	7.8	58 555	9.6	7.6
Other vehicles (excluding motor cycles)	Mar 99	3 623	8.1	17.6	10 861	3.7	9.2
Total registrations (excluding motor cycles)	Mar 99	23 601	9.8	9.2	69 416	8.6	7.9

^a Includes vehicles (other than those of the defence forces) owned by Government departments and authorities. Excludes mobile plant and equipment, tractors, trailers and non-motorised caravans.

Source: *New Motor Vehicle Registrations, Australia, Preliminary (Cat. no. 9301.0)*.

13

NEW MOTOR VEHICLE REGISTRATIONS(a), NSW—SEASONALLY ADJUSTED

Period	Passenger vehicles	Other vehicles (excluding motor cycles)	Total (excluding motor cycles)
	no.	no.	no.
1998			
January	18 053	3 012	21 065
February	18 697	3 202	21 898
March	18 527	3 082	21 609
April	18 913	3 363	22 276
May	18 745	3 207	21 952
June	21 013	3 245	24 258
July	21 482	3 315	24 796
August	19 089	3 266	22 355
September	20 003	3 214	23 217
October	18 356	3 375	21 731
November	r19 815	3 398	23 212
December	19 616	3 501	r23 117
1999			
January	18 567	3 610	22 177
February	18 151	3 353	21 504
March	19 978	3 623	23 601

^a Includes vehicles (other than those of the defence forces) owned by Government departments and authorities. Excludes mobile plant and equipment, tractors, trailers and non-motorised caravans.

Source: *New Motor Vehicle Registrations, Australia, Preliminary (Cat. no. 9301.0)*.

14

ACCOMMODATION ESTABLISHMENTS(a) NSW AND AUSTRALIA—ORIGINAL

Indicator	Unit	Latest period	Latest figure	New South Wales		Latest figure	Australia	
				Change from prior period	Change from same period prior year		Change from prior period	Change from same period prior year
				%	%		%	%
Room nights	'000	Dec qtr 98	3 210.5	4.3	4.2	9 904.4	2.7	4.9
Room occupancy rate	%	Dec qtr 98	59.8	3.3	-1.6	59.4	1.2	-0.7
Takings	\$'000	Dec qtr 98	359 172	5.0	4.5	1 043 155	4.5	5.7

^a Licensed hotels with facilities, motels and guest houses and serviced apartments with 15 or more rooms or units.

Source: Tourist Accommodation, Australia (Cat. no. 8635.0).

15

ACCOMMODATION ESTABLISHMENTS(a) SYDNEY AND NSW—ORIGINAL

Period	Sydney Tourism Region(b)			New South Wales		
	Room nights	Room occupancy rate	Takings	Room nights	Room occupancy rate	Takings
	'000	%	\$'000	'000	%	\$'000
1997						
September qtr	1 555.0	69.6	209 484	2 964.9	59.0	322 065
December qtr	1 653.5	73.0	235 244	3 081.0	60.8	343 650
1998						
March qtr	1 664.9	71.9	235 516	3 017.3	59.8	343 248
June qtr	1 568.3	66.3	216 500	2 890.3	56.3	316 721
September qtr	1 640.0	66.1	222 944	3 077.3	57.9	342 102
December qtr	1 777.0	70.0	246 125	3 210.5	59.8	359 172

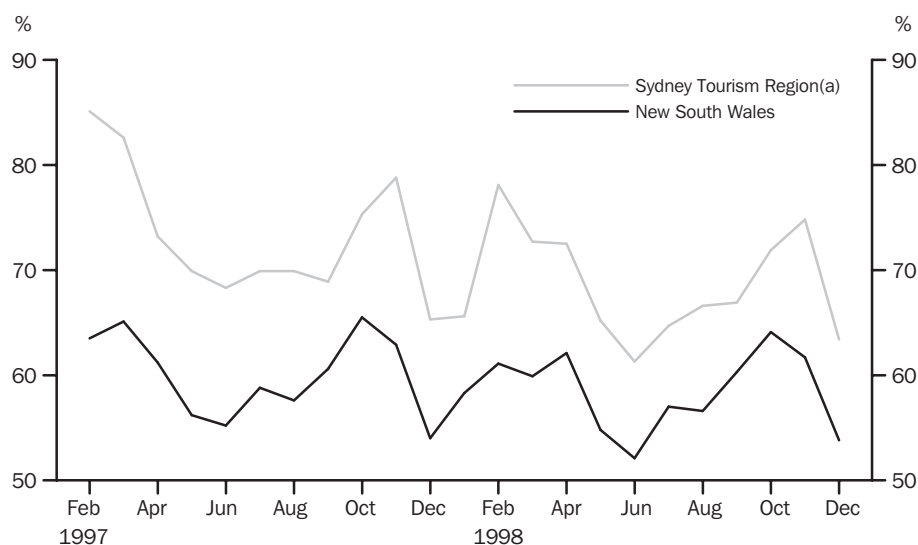
^a Licensed hotels with facilities, motels and guest houses and serviced apartments with 15 or more rooms or units.

^b Excludes Gosford, Wyong and Blue Mountains Statistical Local Areas.

Source: Tourist Accommodation, Small Area Data, NSW (Prod. no. 8635.1.40.001).

16

ACCOMMODATION ESTABLISHMENTS MONTHLY ROOM OCCUPANCY RATE—ORIGINAL



(a) Excludes Gosford, Wyong and Blue Mountains Statistical Local Areas.

Source: Tourist Accommodation, Small Area Data, NSW (Prod. no. 8635.1.40.001).

17

CONSUMER AND PRODUCER PRICE INDEXES, NSW AND AUSTRALIA

Indicator	Unit	Latest period	Latest figure	New South Wales(a)		Australia(b)		
				Change from prior period	Change from same period prior year	Latest figure	Change from prior period	Change from same period prior year
				%	%		%	%
Consumer Price Index (all groups)	1989-90 =100.0	Mar qtr 99	122.6	0.2	1.6	121.8	-0.1	1.2
Price index of materials used in house building (all groups)	1989-90 =100.0	Mar qtr 99	122.0	0.2	1.0	119.5	-0.2	0.7
Price index of materials used in building other than house building (all groups)	1989-90 =100.0	Mar qtr 99	115.2	0.1	0.7	115.2	0.0	1.0

^a Refers to State capital city—Sydney.

^b For the Consumer Price Index this is the weighted average of eight capital cities and for the other two indexes, the weighted average of the six State capital cities.

Source: Consumer Price Index, Australia (Cat. no. 6401.0), Price Index of Materials Used in Building Other Than House Building, Six State Capital Cities (Cat. no. 6407.0), Price Index of Materials Used in House Building, Six State Capital Cities (Cat. no. 6408.0).

18

CONSUMER AND PRODUCER PRICE INDEXES, NSW(a)

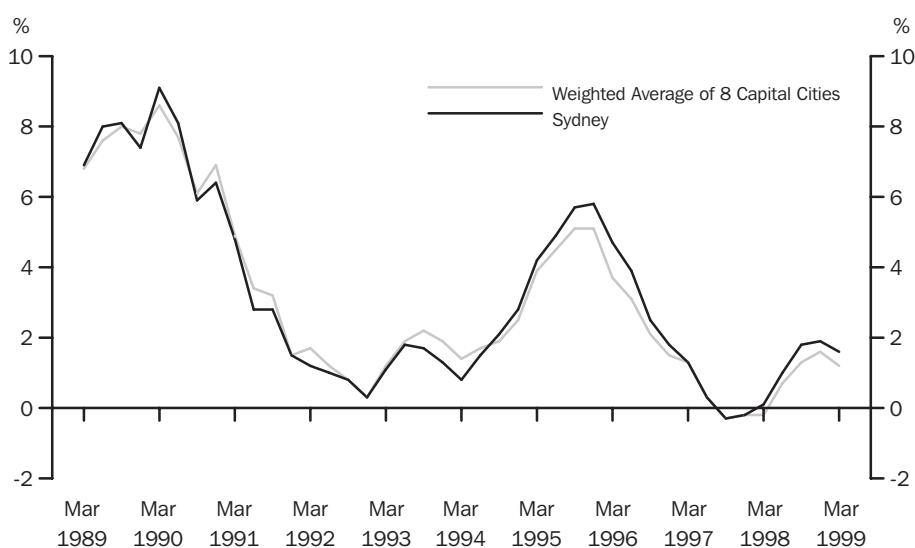
Period	Consumer Price Index, all groups	Price Index of materials used in house building, all groups	Price Index of materials used in building other than house building, all groups
	1989-90 = 100.0	1989-90 = 100.0	1989-90 = 100.0
1997			
December qtr	120.1	119.4	114.2
1998			
March qtr	120.7	120.8	114.4
June qtr	121.4	120.7	114.8
September qtr	121.9	120.8	115.0
December qtr	122.4	121.8	115.1
1999			
March qtr.	122.6	122.0	115.2

^a Refers to State capital city—Sydney.

Source: Consumer Price Index, Australia (Cat. no. 6401.0), Price Index of Materials Used in Building Other Than House Building, Six State Capital Cities (Cat. no. 6407.0), Price Index of Materials Used in House Building, Six State Capital Cities (Cat. no. 6408.0).

19

CONSUMER PRICE INDEX, ANNUAL RATE OF CHANGE



Source: Consumer Price Index (Cat. no. 6401.0).

Indicator	Latest period	New South Wales			Australia		
		Latest figure	Change from prior period	Change from same period prior year	Latest figure	Change from prior period	Change from same period prior year
		\$m	%	%	\$m	%	%
Lending commitments for the construction or purchase of dwellings—							
Construction of dwellings	Mar 99	339	41.8	41.8	999	33.1	34.8
Purchase of newly erected dwellings	Mar 99	107	42.7	-4.5	264	24.2	4.1
Purchase of established dwellings(a)	Mar 99	1 720	40.6	33.4	4 135	31	38.2
Refinancing of existing dwellings	Mar 99	397	27.1	26.1	985	24.3	24.3
Lending commitments for alterations and additions	Mar 99	125	41.3	17.3	318	43.4	24.2
Total lending commitments to individuals for housing(b)	Mar 99	2 562	38.6	31.1	6 383	29.9	33.6
Total lending commitments to individuals for housing (seasonally adjusted)(b)	Mar 99	2 179	14.3	22.6	5 600	10.7	27.2

^a Excludes refinancing.

^b Excludes alterations and additions.

Source: Housing Finance for Owner Occupation, Australia (Cat. no. 5609.0).

Period	Lending commitments for the construction or purchase of dwellings				Total lending commitments to individuals for housing(b)		
	Construction of dwellings	Purchase of newly erected dwellings	Purchase of established dwellings(a)	Refinancing of existing dwellings	Lending commitments for alterations and additions	Original	Seasonally adjusted
	\$m	\$m	\$m	\$m	\$m	\$m	\$m
1995-96	1 895	898	10 145	2 930	1 262	15 868	..
1996-97	2 117	1 234	12 566	4 062	1 221	19 979	..
1997-98	2 625	1 280	14 445	3 573	1 174	21 973	..
1998							
January	169	73	919	238	81	1 398	1 860
February	216	98	1 137	298	105	1 750	1 804
March	239	112	1 290	314	107	1 955	1 778
April	223	107	1 305	285	95	1 920	1 885
May	216	95	1 261	312	99	1 885	1 818
June	262	116	1 360	359	102	2 097	2 037
July	263	123	1 284	376	97	2 045	1 827
August	224	93	1 171	307	85	1 796	1 796
September	242	105	1 158	326	86	1 831	1 755
October	222	95	1 220	302	85	1 838	1 902
November	229	100	1 357	337	91	2 024	2 004
December	235	96	1 343	295	82	1 970	2 095
1999							
January	176	63	1 025	249	74	1 512	2 094
February	239	75	1 223	312	89	1 849	1 907
March	339	107	1 720	397	125	2 562	2 179

^a Excludes refinancing.

^b Excludes alterations and additions.

Source: Housing Finance for Owner Occupation, Australia (Cat. no. 5609.0).

<i>Item</i>	<i>Actual</i>	<i>Estimates</i>
	<i>4 months ended 31 January 1999</i>	<i>12 months ended 30 June 1999</i>
	<i>\$m</i>	<i>\$m</i>
Current receipts—		
Stamp duties	2 286	3 459
Payroll tax	2 087	3 621
Land tax	156	945
Motor vehicle taxes	596	1 002
Gaming and betting	817	1 440
Commonwealth safety net taxes	1 192	1 873
Other taxes	709	1 095
Commonwealth general purpose grants	2 730	4 731
Commonwealth specific purpose grants	1 990	3 230
Dividends/tax equivalents	992	1 251
Other current receipts	694	1 202
<i>Total current receipts</i>	<i>14 249</i>	<i>23 849</i>
Current payments—		
Interest payments	755	1 276
Superannuation	830	1 462
Subsidies to non-budget sector—		
Redundancies	42	77
Services	611	798
Departmental payments—		
Redundancies	39	53
Health	3 355	5 706
Education	3 000	5 364
Law and order	1 016	1 733
Community services	663	1 217
Other	3 321	5 693
Treasurer's advances	. .	125
Less user charges	-1 166	-2 014
<i>Total current outlays</i>	<i>12 466</i>	<i>21 490</i>
Current result surplus/deficit(-)	1 783	2 359
Capital receipts—		
Commonwealth specific purpose grants	415	788
Other capital receipts	14	10
<i>Total capital receipts</i>	<i>429</i>	<i>798</i>
Capital outlays—		
Gross fixed capital payments	1 341	2 841
Capital grants	504	1 016
Less asset sales	390	-745
<i>Total capital outlays</i>	<i>1 455</i>	<i>3 112</i>
Capital result surplus/deficit(-)	-1 026	-2 314
Government Finance Statistics result surplus/deficit(-)	757	45

^a Includes Department of Training and Education Co-ordination, Department of School Education, Office of the Board of Studies and TAFE.

^b Includes Attorney Generals Department, Department of Corrective Services and Police Services.

^c Expenditure from the Treasurer's Advance is included in the relevant current payments figures.

Source: Financial Statement released by NSW Treasury. Figures may differ from data published in annual ABS publications.

23

ACTUAL PRIVATE NEW FIXED CAPITAL EXPENDITURE, CURRENT PRICES—NSW AND AUSTRALIA, TREND

Indicator	Latest period	New South Wales			Australia		
		Latest figure	Change from prior period	Change from same period prior year	Latest figure	Change from prior period	Change from same period prior year
		\$m	%	%	\$m	%	%
Type of asset—							
New buildings and structures	Dec qtr	1 165	3.4	14.6	3 887	2.2	23.6
Equipment, plant and machinery	Dec qtr	2 493	−2.5	−5.3	7 605	−4.4	−9.1
Total	Dec qtr	3 658	−0.7	0.2	11 492	−2.3	−0.1

Source: State Estimates of Private New Capital Expenditure (Cat. no. 5646.0).

24

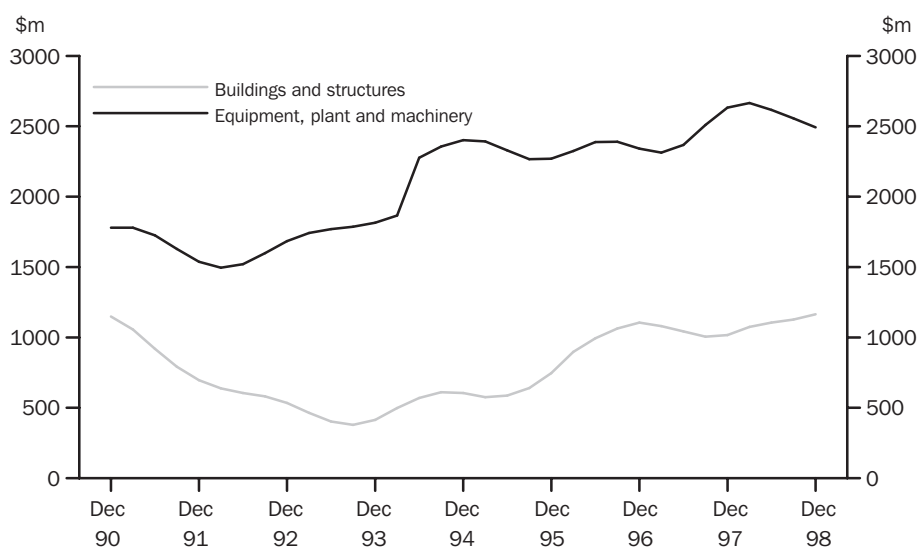
ACTUAL PRIVATE NEW FIXED CAPITAL EXPENDITURE, CURRENT PRICES—NSW, TREND

Period	Type of asset		
	New buildings and structures	Equipment, plant and machinery	Total
	\$m	\$m	\$m
1997			
September qtr	1 005	2 510	3 515
December qtr	1 017	2 633	3 651
1998			
March qtr	1 075	2 666	3 741
June qtr	1 105	2 617	3 723
September qtr	1 127	2 556	3 683
December qtr	1 165	2 493	3 658

Source: State Estimates of New Capital Expenditure (Cat. no. 5646.0).

25

ACTUAL PRIVATE NEW FIXED CAPITAL EXPENDITURE, CURRENT PRICES—NSW, TREND



Source: State Estimates of New Capital Expenditure (Cat. no. 5646.0)

Item	Latest period	New South Wales			Australia		
		Latest figure	Change from prior period	Change from same period prior year	Latest figure	Change from prior period	Change from same period prior year
Overseas imports into NSW	Mar 99	3 764	21.6	9.4	8 709	22.4	6.4
Total overseas exports(c)	Mar 99	1 469	10.9	-2.2	6 922	18.8	-0.2
Export commodities and SITC(d) code—							
Meat and meat preparations (01)	Mar 99	90	13.4	9.2	368	12.1	10.1
Cereals and cereal preparations (04)	Mar 99	111	12.8	-11.8	457	14.7	18.4
Wool and other animal hair (268)	Mar 99	54	-11.0	-26.3	190	-8.8	-32.9
Coal, coke and briquettes (32)	Mar 99	305	12.4	1.3	761	3.4	6.2
Iron and steel (67)	Mar 99	84	21.3	-15.0	149	27.6	-21.4
Aluminium (684)	Mar 99	106	31.0	-0.7	318	56.4	11.1
Office machines and automatic data processing machines (75)	Mar 99	29	14.6	-24.2	58	7.0	-28.5

^a Figures shown are Customs value.

^b Figures shown are Free On Board (FOB) values.

^c Excludes re-exported goods.

^d Standard International Trade Classification Revision 3.

Source: International Trade database.

Period	Overseas exports of SITC(d) commodities								
	Overseas imports into NSW	Total overseas exports(c)	Meat and meat preparations (01)	Cereals and cereal preparations (04)	Wool and other animal hair (268)	Coal, coke and briquettes (32)	Iron and steel (67)	Aluminium (684)	Office machines and automatic data processing machines (75)
	\$m	\$m	\$m	\$m	\$m	\$m	\$m	\$m	\$m
1995-96	34 917	16 684	794	822	720	3 338	1 037	1 111	638
1996-97	34 229	17 730	784	1 540	859	3 426	968	993	535
1997-98	38 481	19 680	923	r1 584	1 061	4 048	1 168	1 226	522
1998									
January	2 945	r1 436	65	134	72	359	115	118	37
February	2 804	1 463	75	119	82	322	87	82	38
March	3 439	1 503	82	r126	73	301	99	107	38
April	3 070	1 481	64	100	66	337	104	100	37
May	3 271	1 672	82	97	67	346	118	109	38
June	3 594	1 643	79	86	49	366	118	126	42
July	3 770	1 609	79	r96	65	342	112	104	41
August	3 473	1 601	69	87	43	356	92	99	32
September	3 551	r1 635	88	118	r60	328	95	111	33
October	r3 680	r1 529	77	59	74	356	68	106	28
November	r3 747	r1 519	85	79	73	332	81	91	26
December	3 465	r1 688	84	139	67	363	70	91	23
1999									
January	r3 024	r1 337	70	102	42	337	68	104	18
February	r3 095	r1 325	r79	r99	r61	272	r70	r81	r25
March	3 764	1 469	90	111	54	305	84	106	29

^a Figures shown are Customs value.

^b Figures shown are Free On Board (FOB) values.

^c Excludes re-exported goods.

^d Standard International Trade Classification Revision 3.

Source: International Trade database

SELF-HELP ACCESS TO STATISTICS

- DIAL-A-STATISTIC* For current and historical Consumer Price Index data, call 1902 981 074.
For the latest figures for National Accounts, Balance of Payments, Labour Force, Average Weekly Earnings, Estimated Resident Population and the Consumer Price Index call 1900 986 400.
These calls cost 75c per minute.
- INTERNET* www.abs.gov.au
- LIBRARY* A range of ABS publications is available from public and tertiary libraries Australia wide. Contact your nearest library to determine whether it has the ABS statistics you require.

WHY NOT SUBSCRIBE?

- PHONE* +61 1300 366 323
- FAX* +61 3 9615 7848

CONSULTANCY SERVICES

ABS offers consultancy services on a user pays basis to help you access published and unpublished data. Data that are already published and can be provided within 5 minutes is free of charge. Statistical methodological services are also available. Please contact:

<i>City</i>	<i>By phone</i>	<i>By fax</i>
Canberra	02 6252 6627	02 6207 0282
Sydney	02 9268 4611	02 9268 4668
Melbourne	03 9615 7755	03 9615 7798
Brisbane	07 3222 6351	07 3222 6283
Perth	08 9360 5140	08 9360 5955
Adelaide	08 8237 7400	08 8237 7566
Hobart	03 6222 5800	03 6222 5995
Darwin	08 8943 2111	08 8981 1218



2130710006998
ISSN 1031-8534

RRP \$16.00

- POST* Client Services, ABS, PO Box 10, Belconnen ACT 2616
- EMAIL* client.services@abs.gov.au